



ARISTON

SPARE PARTS EXPLODED VIEW GAS-WALL BOILER ATM. BURNER

Model

EGIS PLUS

R8203322-07 - 16/09/2019

EGIS PLUS

Gas-wall boiler atm. burner

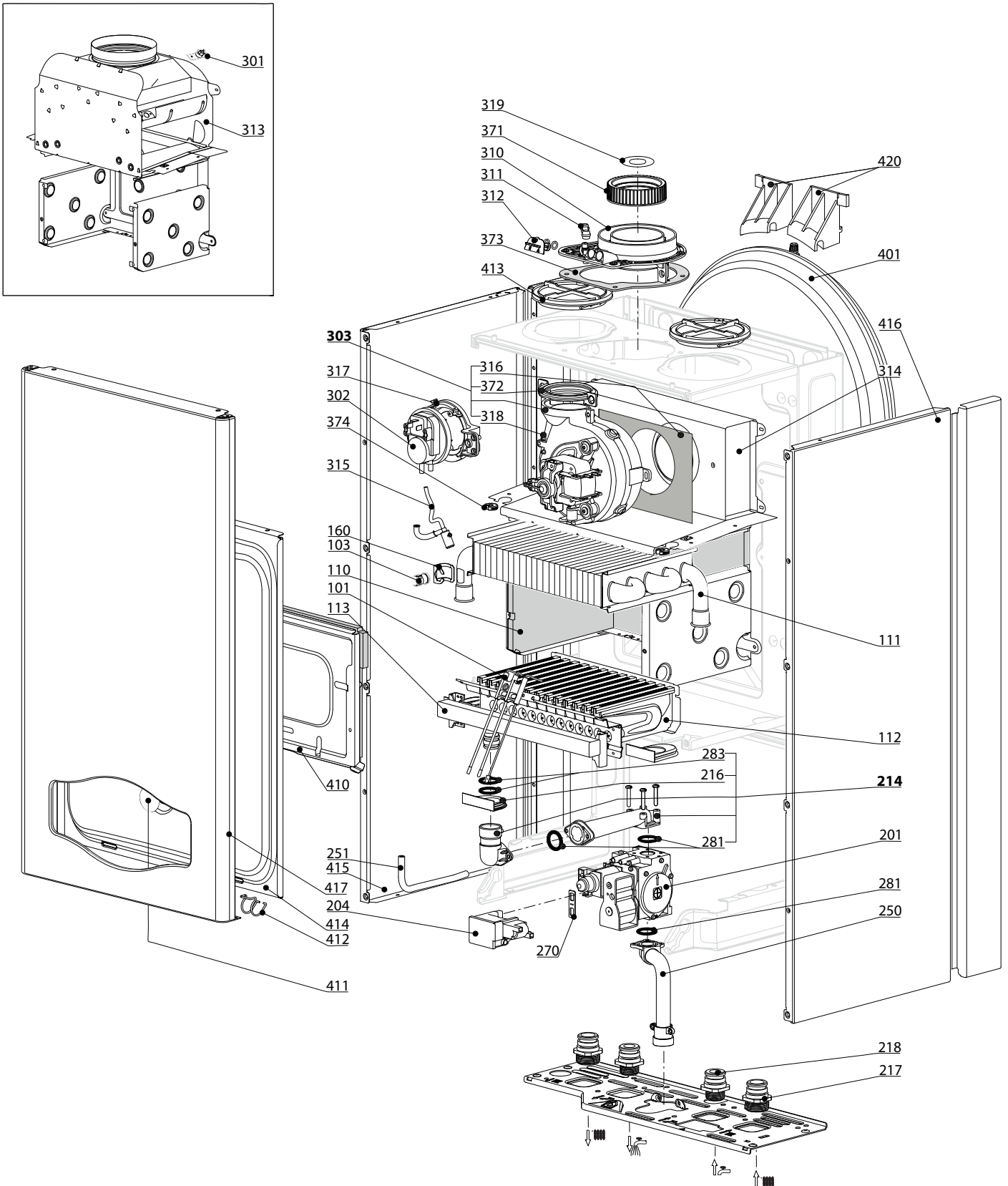
1	3300410	EGIS PLUS 24 CF LPG	03-2011	09-2016
1	3300411	EGIS PLUS 24 CF NG	03-2011	09-2016
2	3300807	EGIS PLUS 24 CF NG EU	02-2016	10-2018
3	3300412	EGIS PLUS 24 FF LPG	03-2011	09-2016
3	3300413	EGIS PLUS 24 FF NG	03-2011	12-2016

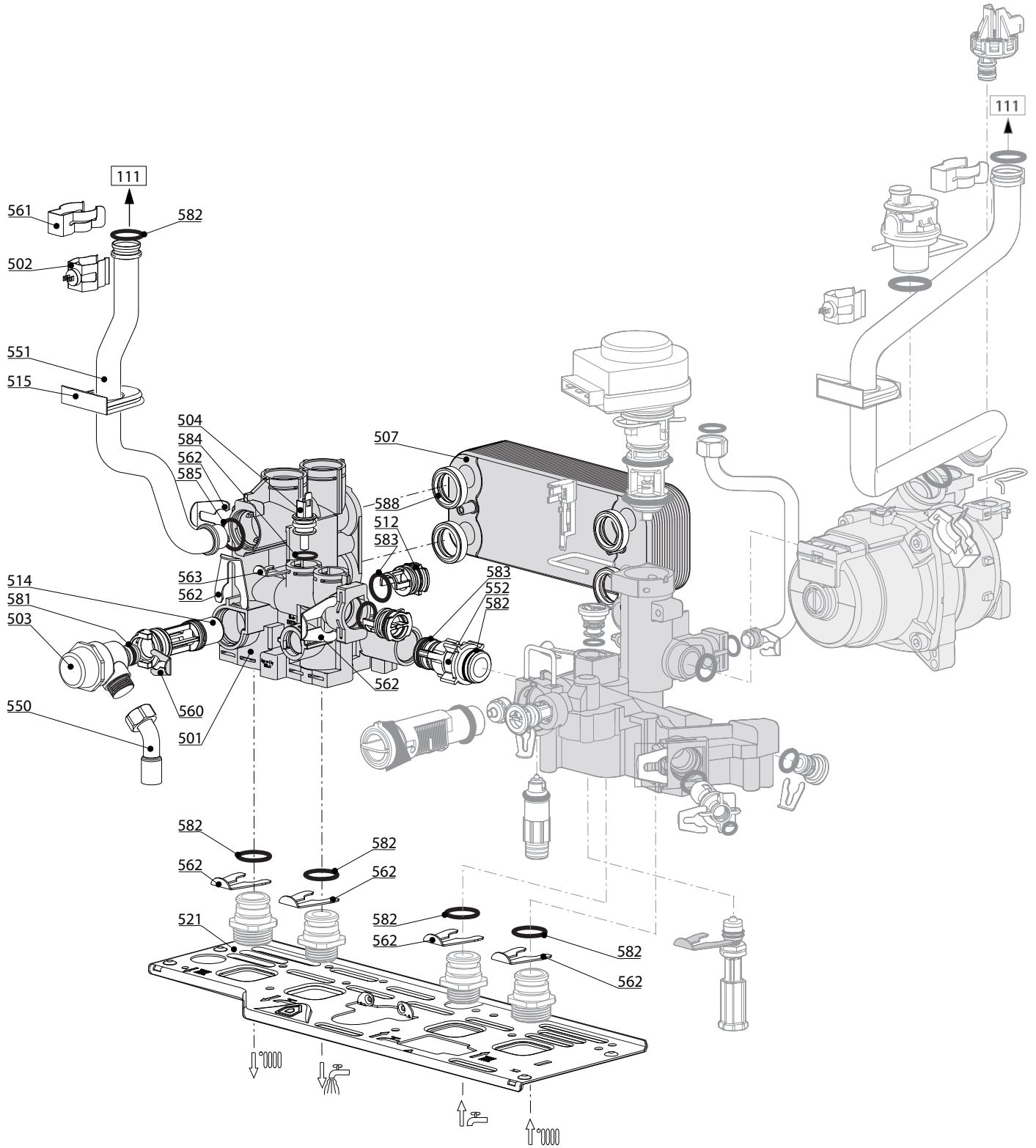
Col	Reference	Model type	Begin	End
-----	-----------	------------	-------	-----

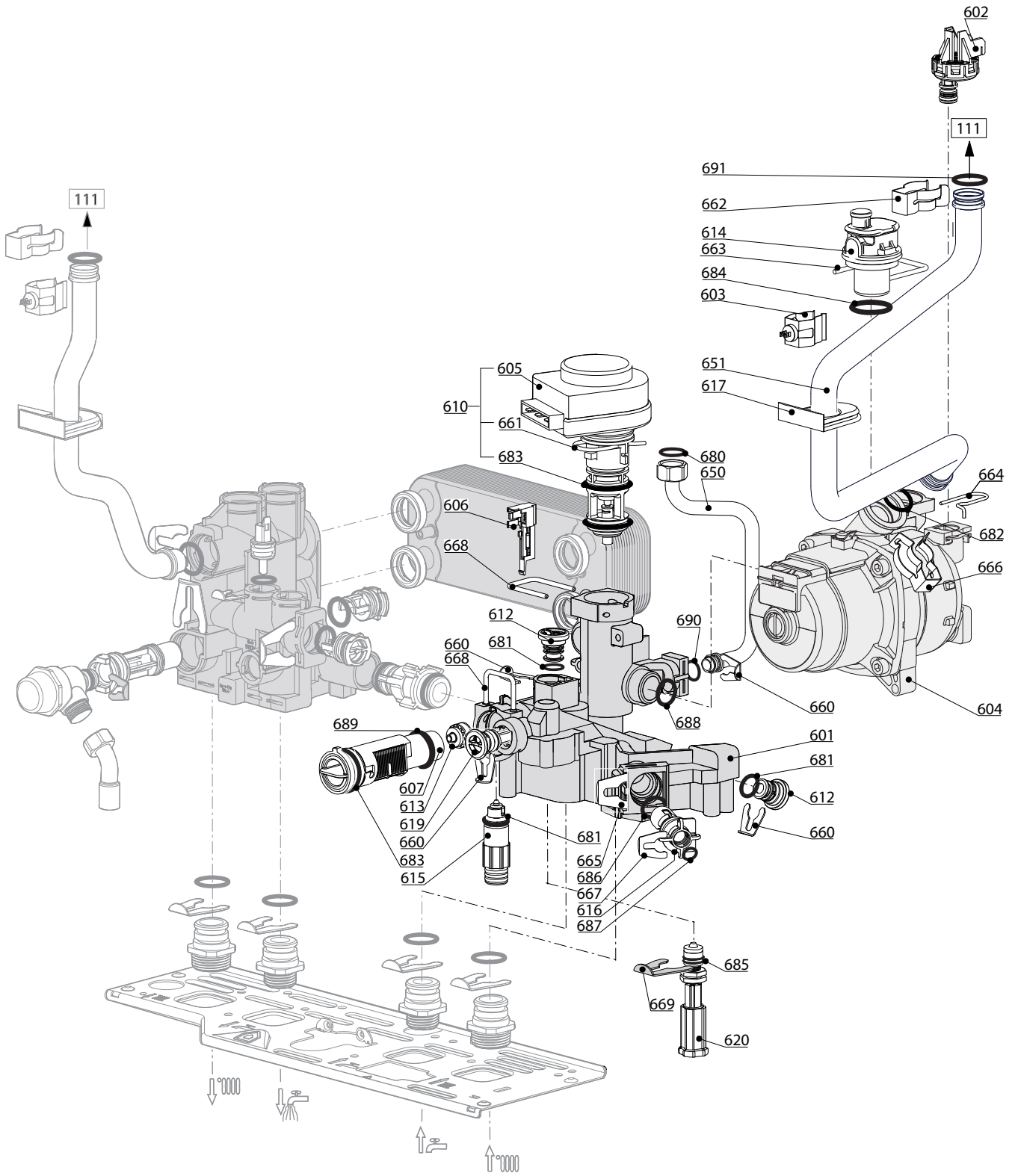
100
200
300
400

EGIS PLUS

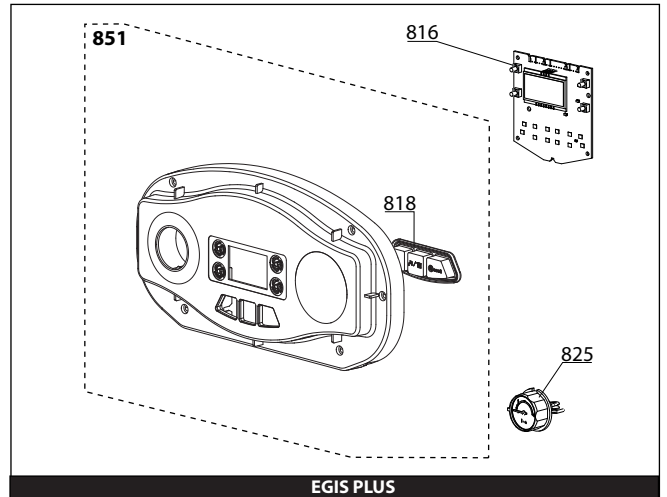
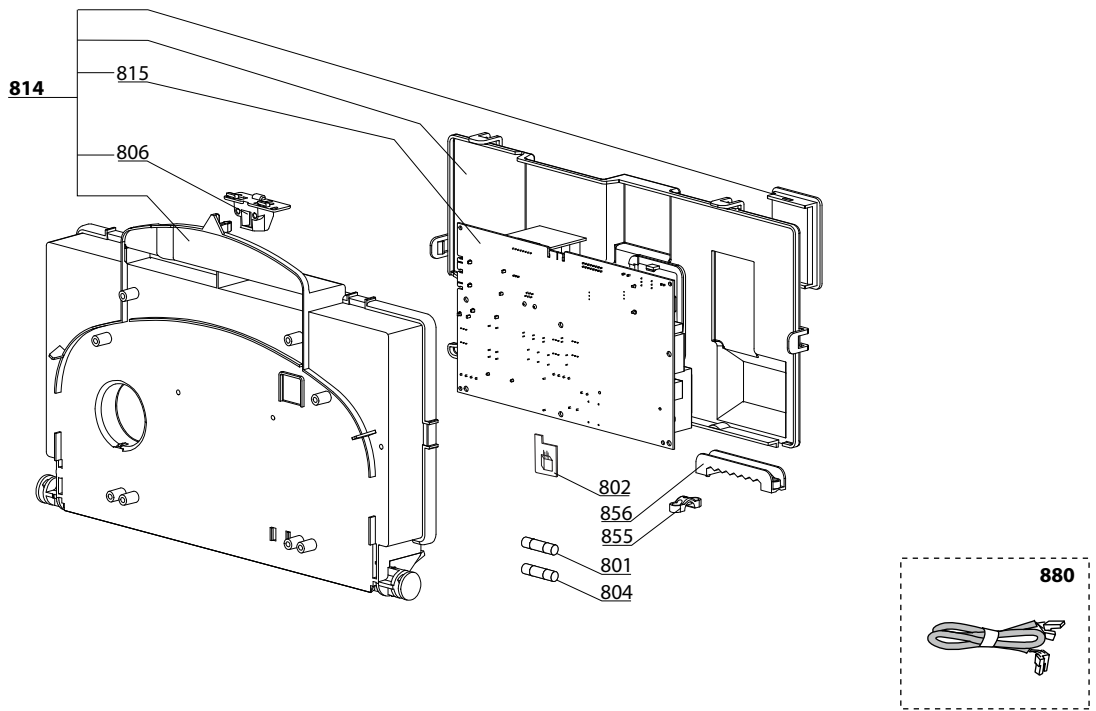
Gas-wall boiler atm. burner



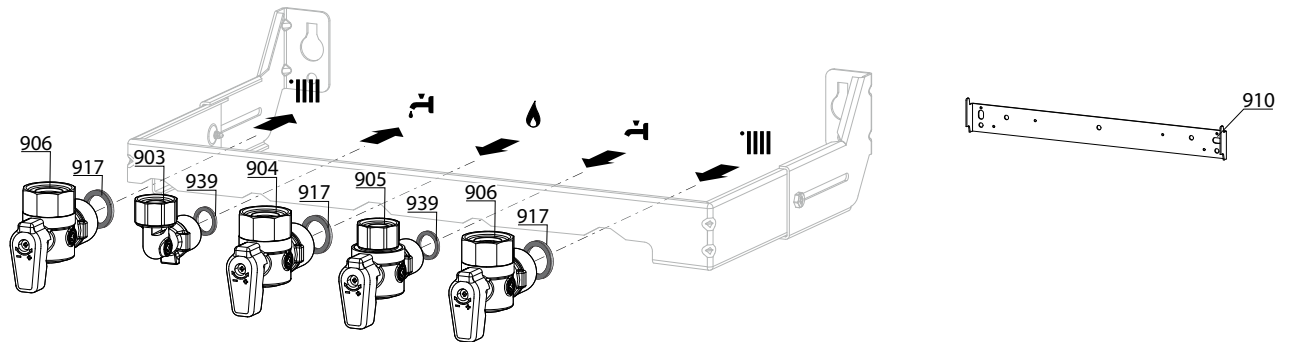




800



900



5000

5001
 Transf. gaz > GPL
 Conv. gas > GPL
 Trasn. gas > GPL
 Transf. gas > GPL

5002
 Transf. gaz > Nat
 Conv. gas > Nat
 Trasn. gas > Met
 Transf. gas > Met

LIST OF THE ABBREVIATIONS

HW	: Hot water.
CW	: Cold water.
C	: Ceramic resistance (normal heating).
Ca	: Ceramic resistance (accelerated heating)
TP	: Immersion heater.
1F	: With fittings.
2F	: Without fittings.
3F	: With fittings and another outlet connection.
AMI	: With mixing valve.
SMI	: Without mixing valve.
PUISS	: Power of th appliance.
PN	: Appliance with normal pression.
LP	: Appliance with low pression.
PV	: Appliance with variable power.
PF	: Appliance with fixed power.

IDENTIFICATION PLATE

SERIAL NUMBER

10 Characters :

04 05 125 011
 Year of manufacture Manufacturing day Sequential number

11 Characters :

1 95 065004 - 31
 Month of manufacture : from 1 to 9 → Jan. to Sep.,
 O → Oct., N → Nov.,
 D → Dec. Technical number of the appliance
 Sequential number
 Year of manufacture

19 Characters :

08 05 0013199 900640031
 Year of manufacture Month of manufacture Product reference
 Sequential number

20 Characters :

3675007 XX 2 07 070 00315
 Product reference Millenium of manufacture Sequential number
 Manufacturing day Year of manufacture

21 Characters :

3675007 XX 07 070 0000315
 Product reference Year of manufacture Sequential number
 Manufacturing day